



The Charolais Pavilion,
Avenue M,
Stoneleigh Park, Kenilworth,
Warwickshire, CV8 2RG
t: 024 76 697731
f: 024 76 697776
www.rugbyfarmersmart.com
Holding No. 43-139-8013

Office Hours: Monday to Friday – 9.00am to 5.00pm
Opening Time: Gates open at 5.30am until further notice

Market Reports For Monday 30th December 2019

Market At A Glance



Prime Steers to 235p/kg & £1323
Prime Heifers to 238p/kg & £1371
OTM Cattle to 120p/kg & £1054
Prime Lamb SQQ 216p/kg (2505)
Prime Lambs to 275p/kg & £125
Calves to £270
Store Lambs to £85
Ewes to £155 (680) Avg £80



**Monday 20th January
Sale of Store Cattle**

**Monday 3rd February
Sale of Store Cattle**

Catalogues & Entry Forms available by post, email or on the website
www.rugbyfarmersmart.com ~ admin@rugbyfarmersmart.com

CATTLE:67 Forward

In Rugby Auction on Monday 30th December. Presented for sale were 38 Prime Cattle, Cast Cows and one stock bull. A reduced show of cattle were forward due to the restricted new year slaughtering hours. The cattle sale proceeded at 10am, this seems to have many advantages regarding the values, transportation and the running of the sale. We may look to continue this from this point forward please do get in contact should you have any questions or require an onfarm visit.

Leading prices are as follows.

Top price per kilo for Steers and Heifers

238 235xx3 234 229 228 Page Bros, 230 197 DTP&PA Walters, 229 PM Jarrom, 214 190 RJ Wright, 210 RW Cross & Ptnrs, 193 AE&AM Tacy, 191 MJ Woodward, 190 R Smith & Son

Lead grossing Steers and Heifers

£1370 £1341 DTP&PA Walters, £1348 PM Jarrom, £1332 £1309 £1237 £1147 £1142 Page Bros, £1229 £1190 RJ Wright, £1197JHB Hart, £1187 RW Cross & Ptnrs, £1170 AE&AM Tacy, £1155 MJ Woodward.

Cast Cows sold to 120pkg and £780.

With the new year upon us, we in Rugby Auction mart are into a faster gear regarding the sale of Prime Cattle and Cast Cows. We require all classes of Prime Cattle, Cast Cows and Prime Bulls from now, all breeds, weights and condition are catered for with no disadvantage on price.

Numbers of cattle are not a problem. Please do get in touch ASAP Andy Armstrong 07902 316268

Auctioneer: Andrew Armstrong

STEERS & BULLS:			
Top prices per head			
Limousin x	563kg	£1323	Page Bros
Limousin x	531kg	£1216	Page Bros
Limousin x	651kg	£1146	R W Cross & Partners
Top prices per kilo			
Limousin x	563kg	235ppk	Page Bros
Limousin x	531kg	229ppk	Page Bros
Limousin x	651kg	176ppk	R W Cross & Partners

HEIFERS:			
Top prices per Head			
Limousin x	596kg	£1371	DTP & PA Walters
Limousin	589kg	£1349	P M Jarrom
Limousin x	681kg	£1342	DTP & PA Walters
Limousin x	660kg	£1333	Page Bros
British Blue	557kg	£1309	Page Bros

Top prices per Kilo			
Limousin x	560kg	238ppk	Page Bros
British Blue	526kg	235ppk	Page Bros
British Blue	557kg	235ppk	Page Bros
Limousin x	490kg	234ppk	Page Bros
Limousin	496kg	230ppk	DTP & PA Walters

**Please could all vendors book in stock, either by a quick call,
text or email Thank You!**

Office: 02476697731

Email: admin@rugbyfarmersmart.com

Tom: 07774723758

CALVES: 34 Forward

A much shorter entry due to the festivities but put simply, what a trade!

Continental calves on fire today with Best Bulls actively £250 plus, topping at £270 for a British Blue x from KC & DA Hughes. Rearing sorts £175-£200

Native Calves again a joy to selling topping at £268 for Angus Bulls from Pete Hemmings. Best Bulls all over £200 with Herefords to £202 from Border Holdings. Heifers to £160 for Angus x from The Hughes with Herefords to £135 from Border Holdings.

Dairy x Bulls topping at £52 for Black and Whites from Stuart Warden. I would like to thank all of the Vendors and Buyers for their support in the calf section this year, and of course the volunteer staff for their continued help!

Auctioneer: Martin Lloyd

SHEEP:3544

Prime Lambs: 2505 Forward SQQ 216p/kg

Back to it and our usual 10 buyers in attendance today. Deadweight quotes dropping like a stone and uncertainty on kill times left buyers unsure as to stick or twist. As it turns out they decided to twist and the yarding of just over 2500 say an SQQ of 216p/kg equal to £4.59 on the deadweight. Best lambs as ever rewarded topping in the Euro section at 275p/kg for Hillside with Beltex at 40kg ahead of shape from D W Gurney & Son pen of 13 37kg at 257p/kg with Chiltern Beltex 244p/kg at 34kg. Messrs Gurney again 242p/kg for 12 lambs to make his whole load of 217 lambs avg 221p/kg to 44.80kg. In the heavies meat again rewarded to sell at 236p/kg for 47kg from SLAM farming with 46kg to 233p/kg from Chiltern Beltex and 47kg from Hyde Lane Farms 232p/kg, even 51kg to 231p/kg from Slapton Manor. In the lump Euro lambs topping out at £110 for 40kg from Hillside Farm with Beltex whilst BJ & IS Wain £105 at 43.5kg and G L Woodard £104 at 44kg with SLAM Farming £102 at 43kg. Overall heavies a bewildering trade at £125 for a pen full of 66kg from Angela Tarry-Smith and Tom with Ted Taylor £122 at 66kg ahead of Slapton Manor at £118 for 78kg and Ben Nichols who thought they could have weighed a little more at 70kg to £119. Trade today a reaction to sales and we must now whether January. Happy New Year to all.

Auctioneer: Tom Wrench

Prime Lambs : under 45.5kg SQQ p/kg			
Per Kilo			
Beltex x	40.00kg	275ppk	J A & S Wrench
Beltex x	37.00kg	257ppk	D W Gurney & Son
Beltex x	32.00kg	244ppk	Chiltern Beltex
Beltex x	37.00kg	242ppk	D W Gurney & Son
Texel x	43.50kg	241ppk	BJ & IS Wain

Per HEAD			
Beltex x	40.00kg	£110.00	J A & S Wrench
Texel x	43.50kg	£105.00	BJ & IS Wain
Texel x	44.00kg	£104.00	G L Woodward
Texel x	43.00kg	£102.00	J K Smith & Sons
Texel x	43.00kg	£101.50	J K Smith & Sons

Prime Lambs: OVER 45.5kg			
Per kilo			
Texel x	47.00kg	236ppk	SLAM Farming
Beltex x	46.00kg	233ppk	Chiltern Beltex
Texel x	47.00kg	232ppk	Hyde Lane Farms
Beltex x	51.00kg	231ppk	R & B Smith
Texel x	53.00kg	223ppk	R & B Smith

Per HEAD			
Suffolk x	66.00kg	£125.00	A Tarry- Smith
Charollais x	66.00kg	£122.00	E J Taylor & Son
Texel	78.50kg	£119.00	R & B Smith
Charollais x	70.00kg	£119.00	B Nichols
Suffolk x	60.00kg	£118.00	A Tarry-Smith

Store Lambs: 359 Forward

A handy show forward today with the usual mix of the good, bad and indifferent. Top today from Hyde Lane Farms and MR Cross both to £85. Best lambs all over £78 with short term types all £70-£80. Farming lambs £65-£68 with better headed growing lambs £62-£64. Harder bred growing lambs £58-£60 and these looking by far the dearest sold. A small show of goats forward today topped at £71 for Boer Nanny Kids from K Butcher.

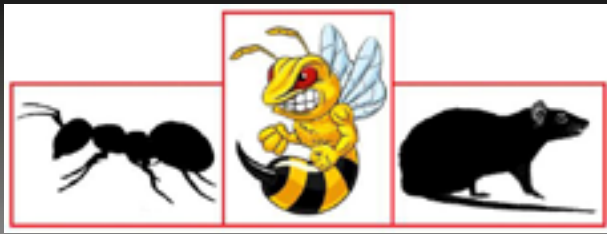
Auctioneer: Martin Lloyd

Cull Ewes: 680 Forward

A mixed show of ewes forward with just about every type and description covered. Trade would be quoted a shade dearer than before Christmas ewes still wanted with the best end flying. Top today from S Taylor with Beltex to £155, before JA Shaw & Partners sold Rams to £145. Beltex again from Mr Taylor to £140 and £135 respectively with A Pittom's Texels to £134. Top Suffolks today to £105.50 from David Wilson with top Mules to £88 from Harry Bishop. Ewe trade must still however be monitored as scanned culls come into the system and ewes start to struggle in the weather.

Auctioneer: Tom Wrench

Beltex	£155	S F Taylor	Beltex	£133	S F Taylor
Texel x	£145	J A Shaw & Partners	Texel x	£130	H Collins & Son
Beltex	£140	S F Taylor	Beltex	£128	S F Taylor
Beltex	£135	S F Taylor	Texel x	£125	S Wise
Texel x	£134	A Pittom	Texel x	£122	H Collins & Son



RDB Pest Control

Reliable | Trustworthy | Fast | Effective
Competitive Prices

Ryan Brunt

07922 091 459

rdbpestcontrol@outlook.com

Why You Should Choose Us

- ✓ Cater for Red Tractor and Farm Assurance Schemes
- ✓ Wide ranging experience on Farms with existing agricultural customers
- ✓ Member of Warwickshire Young Farmers
- ✓ Fully qualified - Level 2 RSPH in Pest Control
- ✓ Trustworthy and security vetted
- ✓ Prompt, reliable fast response

A selection of sites where I have experience:

Police Sites • Local Airport • Farms • Warehouses • Offices
• Industrial Estates • Food Premises • Private Houses
Country Estates • Building Sites • Local Councils • Schools •
Day Nurseries • Care Homes

**Agricultural Services available including Muck Spreading,
Ploughing, Cultivation and much more!**

Call Will for more info: 07795632527

Always Happy To Help!

Sheep Grazing Wanted

Please contact Stuart Wise 07880742082 or Lesley 07564645504



AUTO GATES LTD

Bridge Farm, Holt Lane, Ashby Magna, LE17 5NJ

Trevor 07498993897/01455 202791

Email: tjautogate@gmail.com

Fitted to new or existing gates, wood or steel automated.

Sliding, swinging or cantilever.

Hy-line pullets point of lay available now brown egg layers.

Please contact Mark Martin on 07976 260 775 or 01788 565766

George Fell Services

Fencing & Hedge Trimming

Call 07769595856



**FINISHING CATTLE?
GROWING CATTLE?
FEEDING SHEEP?
DO YOU WANT
HIGH PERFORMANCE
COST EFFECTIVE
FULLY ASSURED
AND
COMPLETE FEEDS?**

THEN CONTACT

BERRYSTOCK FEEDS

TEL: 01788 890320

E-MAIL: john@berryfieldsfarm.co.uk

www.berrystockfeeds.co.uk

BERRYFIELDS FARM
DAVENTRY
NN11 8NP

FOR SALE

Chocolate Labrador Puppies

KC Registered, Inoculated

Call John 07933519031

Call Tom on 07807 693858, 01926 814731
or email to tom.reeve@aol.co.uk

Tom Reeve Contracting

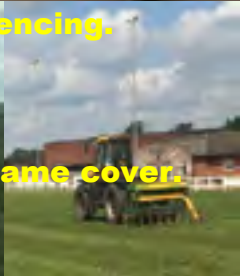
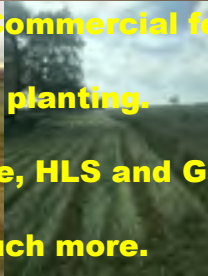
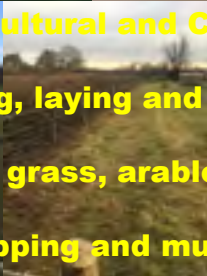


Domestic, Agricultural and Commercial fencing.

Hedge coppicing, laying and planting.

Slot seeding for grass, arable, HLS and Game cover.

Slitting, Flail topping and much more.



For Sale

Good round bale haylage
Call Jane 07754488292

Wanted

Full-time worker required for sheep and cattle farm also some tractor work.
Good rate of pay for a reliable, experienced person.
Stratford Upon Avon area.
Call Steve on 07771560251

Hedge Cutting Contracting Service
Call Tom Lambert on 07824489716

For Sale

2 Pedigree Aberdeen Angus Stock Bulls
only selling as back on daughters
Call 07774723758

Wanted

Sheep & Cattle Grazing
Call 07760266701

Farm Insurance Specialists

Call 01865 844994

Visit www.county-insurance.co.uk



County
Insurance
Services

County Insurance Services, County House, Grove Court, Leighton
Linslade, Bedfordshire, MK44 3JH. County Insurance Services is
authorised and regulated by the Financial Conduct Authority, a FCA 144572

JMT ENGINEERING REQUIRE CLASS 1 & 2 Lorry drivers.
Please ring Mark on 07970382951 or 01926 614345 for details"

T.A.R HIRE

- **FOR HIRE:**
- **10 & 14 TON REAR MUCK SPREADERS**
- **12 TON TRAILERS WITH SILAGE SIDES**
- **ROAD SWEEPER**
- **FLAT TRAILERS**
- **GRASS TOPPERS**
- **CONTRACT MUCK SPREADING SERVICES**

CONTACT:

DAVENTRY (ROB) - 07801791212

HINCKLEY (ALAN) - 07802951179



THE FARMING COMMUNITY NETWORK

The Farming Community Network is a voluntary network of volunteers, many of whom are members of the farming community.

We provide confidential pastoral and practical support for as long as needed to help people find a positive way forward through their problems.

FCN HELPLINE 03000 111 999

e-helpline;chris@fcn.org.uk

CHAPLAIN TO RUGBY LIVESTOCK MARKET –

Revd. Barbara Clutton, 01788 810372 or 07808 137550,

I'm around in the market most Mondays if needed, or just ring me if it's easier – I'm here to help with any farming or family issues.

Copies of "Fit For Farming" – men's health booklet are available at the market – please do take a copy.



WE COVER SMALL FARMS, LARGE FARMS AND EVERYTHING IN BETWEEN

**From sheep farmers to arable farmers.
Flower growers to poultry farmers.**

We're proud to insure over 70% of UK farms with our Farm Select insurance. But we want more farms to benefit from our great cover and local service. That's why we've introduced Farm Essentials insurance - designed to meet the needs of smaller farms.

As your local agency, we are close by and can provide expert advice and hands-on support when you need it.

Call **Coventry Office**
on **02476 444519**

NFU Mutual, 6 Eastwood Business Village,
Harry Weston Road, Binley Business Park,
Coventry, CV3 2UB



NFU Mutual
INSURANCE | PENSIONS | INVESTMENTS

Rugby Farmers Mart Ltd

Forthcoming Sales 2019

Friday 20th January
Sale of Store Cattle

Monday 3rd February
Sale of Store Cattle

Find us on Social Media



@rfm_ltd



Instagram

rugbyfarmersmartltd

Vendors who are wishing to sell stock please feel free to contact:

Tom Wrench - 07774 723758

Martin Lloyd - 07972 375351

Andrew Armstrong - 07902 316268

Steve Martin - 07960 085950

who will gladly make
A FREE ON FARM VISIT & VALUATION